



# HOW THE MICROSOFT MODERN WORKPLACE CAN TRANSFORM YOUR ORGANISATION

26<sup>th</sup> August 2022



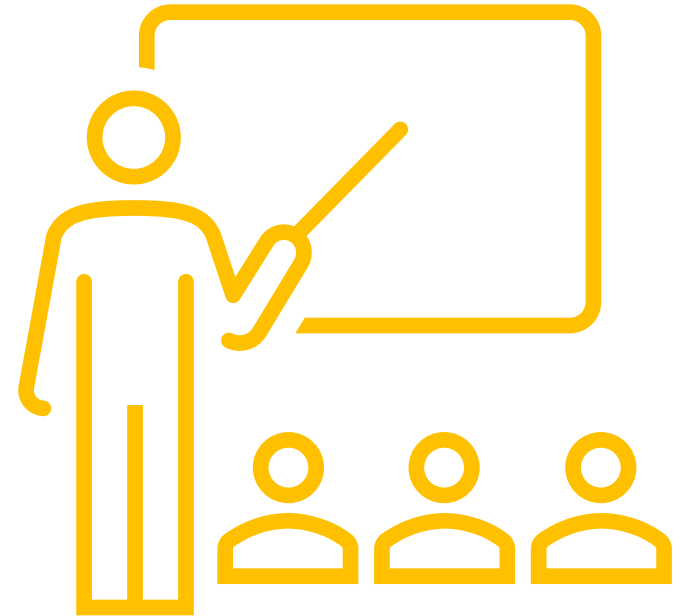
**Thank you for joining – we'll be starting soon**

**the I.T. team**<sup>TM</sup>  
Maintaining the health of your I.T. system

*Connecting Up*   
POWERED BY  Infoxchange

## BY THE END OF THIS WEBINAR YOU WILL;

- Understand what Microsoft Modern Workplace is.
- Understand the non-technical benefits of adopting this technology.
- Have seen a real-life Case Study – organisational transformation.
- Know where to start in the M365 Modern Workplace journey.

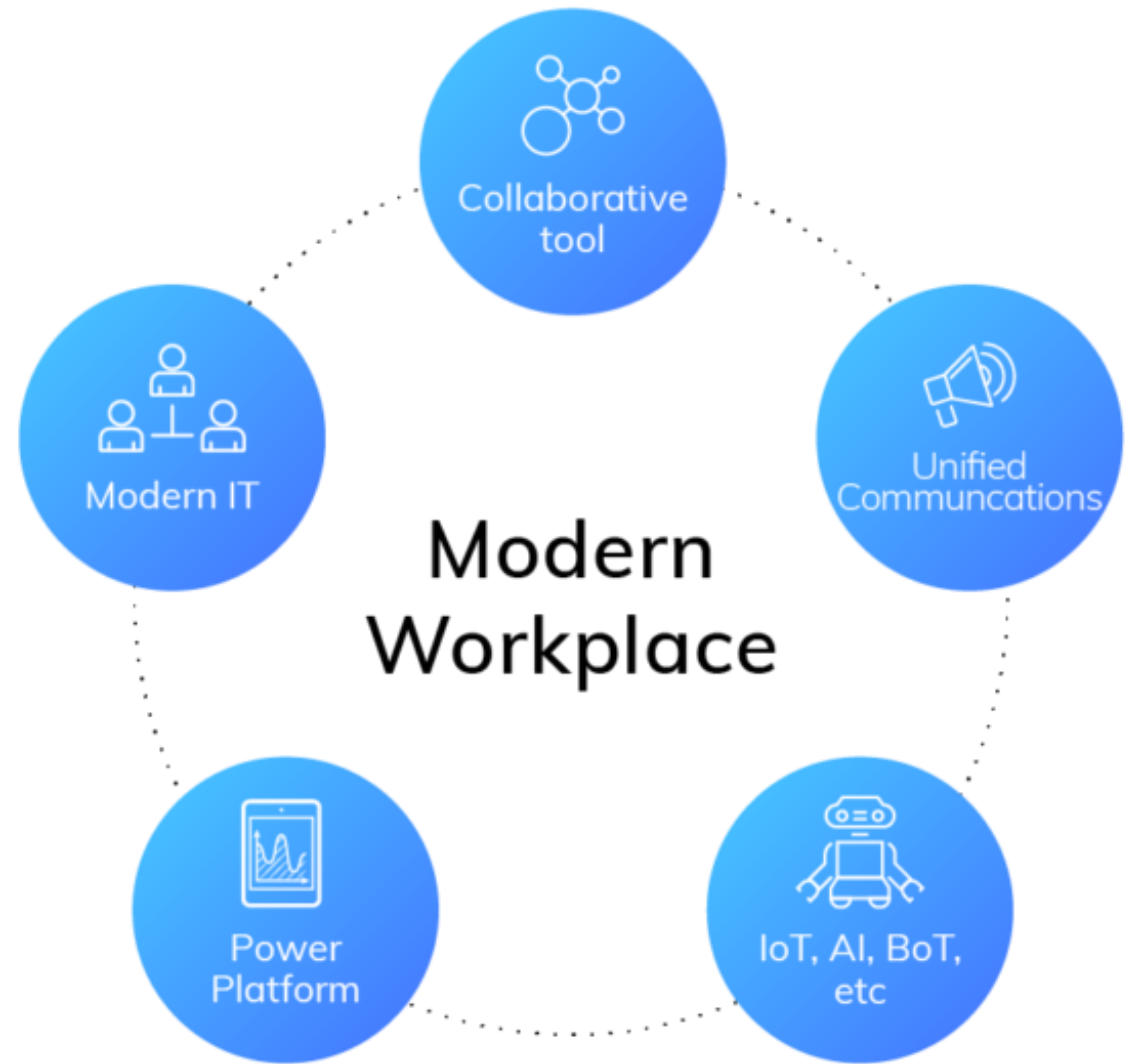


**the I.T. team™**  
Maintaining the health of your I.T. system

**THE I.T. TEAM DELIVERS  
RELIABLE, WELL MANAGED &  
COST-EFFECTIVE I.T. SERVICES.**



# WHAT IS MICROSOFT MODERN WORKPLACE?

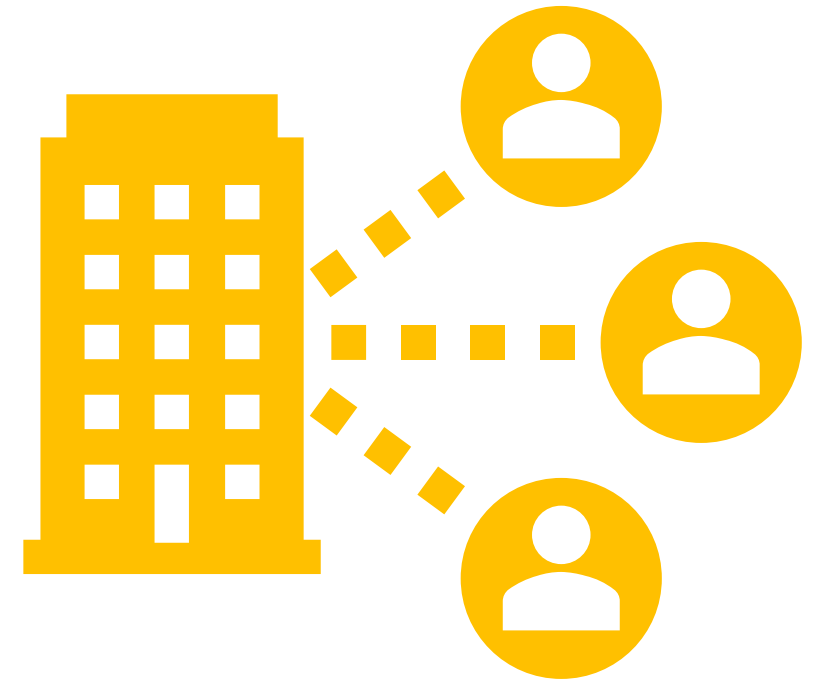




## WHAT IS MICROSOFT MODERN WORKPLACE?

The definition of a Modern Workplace is an operational setup which has been professionally designed to meet both the physical and technological needs of both your business and its employees.

A Modern Workplace drives company-wide business transformation by utilising the latest Microsoft technology to power and streamline business operations and empower employees to do their best work.

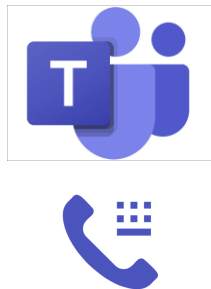




# WHAT IS MICROSOFT MODERN WORKPLACE?

The Microsoft Modern Workplace is one that operates using the suite of Microsoft 365 technologies and productivity applications that harness the power of the Cloud.

Office 365

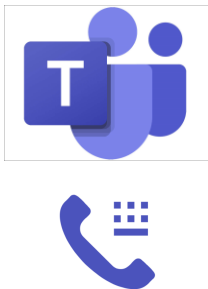




## WHAT IS MICROSOFT MODERN WORKPLACE?

- Mobile Workforce
- Productivity Oriented
- Ease of Communication
- Highly Collaborative
- Continuing to Evolve
- Security Centric

 Office 365

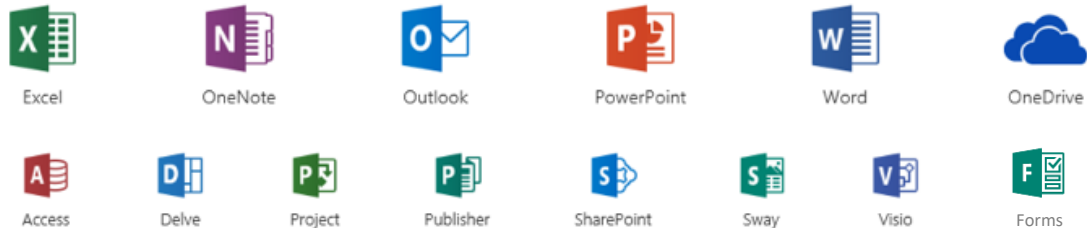




# WHAT IS MICROSOFT MODERN WORKPLACE?

## Microsoft 365 & Exchange Online

M365 is a Software as a Service (SaaS) solution that combines the traditional Microsoft Office desktop applications, Microsoft application services, and some new productivity services.



Exchange Online is a hosted email solution with business-class capabilities.







## WHAT IS MICROSOFT MODERN WORKPLACE?

### Sharepoint & OneDrive

SharePoint provides a **web-based space where users can upload a document to immediately be shared with other people that need to see it.** ... Links to shared documents or collaboration spaces can also easily be sent via email, making it easy for users to be quickly directed to exactly what they want to see.

OneDrive is the **cloud storage service that Microsoft offers to store all your files securely in one place**, which you can then access from virtually anywhere. The service works like a traditional external drive, but with the difference that it is available through the internet and offers additional features.



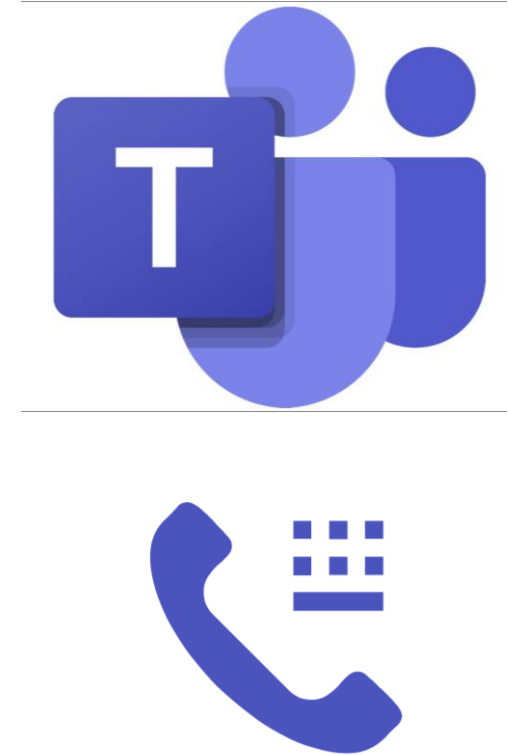


# WHAT IS MICROSOFT MODERN WORKPLACE?

## Teams & Teams Calling

In Microsoft Teams, teams are **groups of people brought together for work, projects, or common interests**. Teams are made up of two types of channels — standard (available and visible to everyone) and private (focused, private conversations with a specific audience). It has Instant Messaging, Sharing, Collaboration and Video conferencing capabilities.

Teams Calling is simply making and receiving phone calls within the Teams environment.





# WHAT IS MICROSOFT MODERN WORKPLACE?

## Enterprise Mobility & Security

Microsoft Enterprise Mobility + Security (EMS) is an intelligent mobility management and security platform. It helps protect and secure your organization and empowers your employees to work in new and flexible ways.

- **Identity and access management**
- **Information protection**
- **Threat protection**
- **Cloud security**





# WHAT IS MICROSOFT MODERN WORKPLACE?

## Apps

Power Apps is a service for building and using custom business apps that connect to your data and work across the web and mobile - without the time and expense of custom software development.

With Power Automate organisations can create streamlined automated workflows;

- **Business processes**
- **Send automatic reminders for past due tasks**
- **Move data between systems on a schedule**
- **Automate tasks like computing data in Excel**



Power Automate



Power BI



# WHAT IS MICROSOFT MODERN WORKPLACE?

## Azure

Microsoft Azure, is Microsoft's public cloud computing platform providing a range of cloud services, including;

- **Compute**
- **Analytics**
- **Storage**
- **Networking**

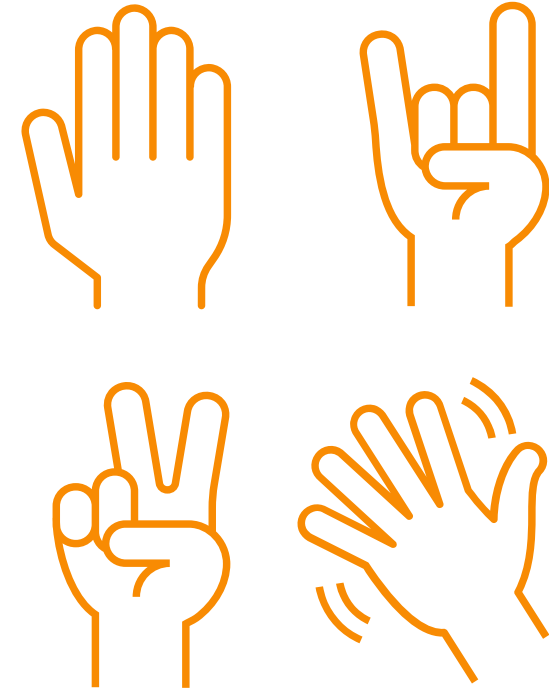
Businesses can pick and choose from these services to develop and scale new applications or run existing applications in the public cloud.



## SOLVING WORKPLACE CHALLENGES

### Disparate communication channels

Disparate communication channels – employees communicate through a variety of different channels which enables messages to get lost in translation, there is limited visibility and a lack of control.



## **SOLVING WORKPLACE CHALLENGES**

### **Stand-alone platforms/tools**

Stand-alone platforms – business management platforms are implemented that have very limited integration and automation with each other. This makes the risk of error high and increases workload.

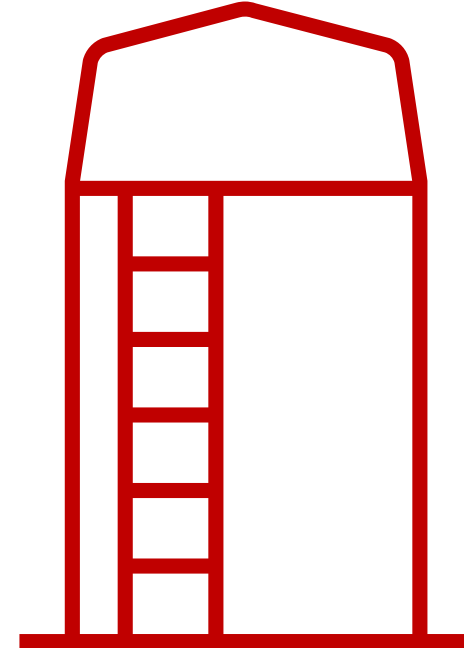




# **SOLVING WORKPLACE CHALLENGES**

## **Data/Team Silos**

Data/Team Silos – Teams work in silos with limited visibility to other parts of the business. Data is stored in numerous locations and access is restricted due to the setup.



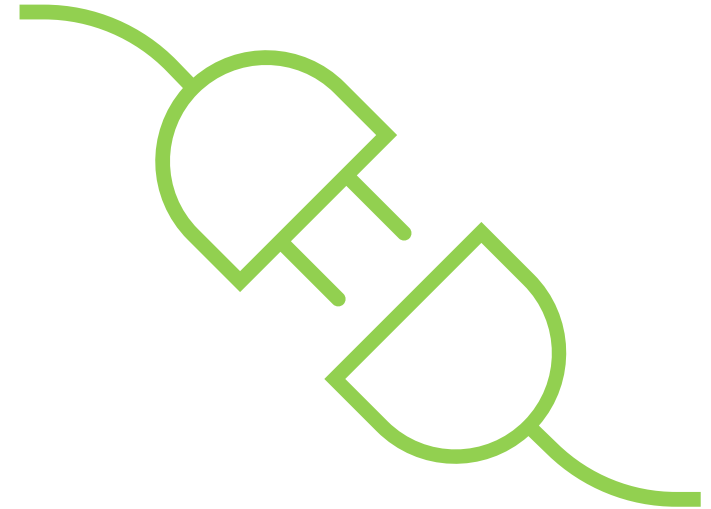




# **SOLVING WORKPLACE CHALLENGES**

## **Hardware**

Hardware – Desktop PCs are commonly used, not all employees have access to laptops or tablets which disables remote working.

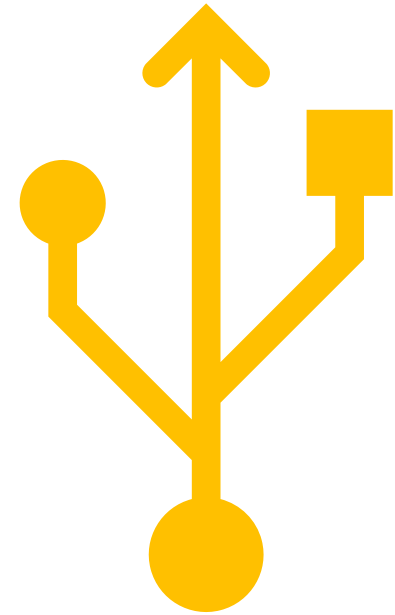




## **SOLVING WORKPLACE CHALLENGES**

### **Technology**

Technology – The technology you have implemented has scalable limitations and does not completely meet the needs of your employees.





## **SOLVING WORKPLACE CHALLENGES**

### **Lack of Security and Data Governance**

Security – There is limited or no device or cyber security management in place putting your business at risk in the event of a breach.



# CASE STUDY: THE I.T. TEAM STORY

## How we started:

Forced into change following the 2011 Canterbury earthquakes.

Office 365 cloud email added mobility and flexibility.



Yammer was our tool of choice for notifying our team of absences and other key noteworthy events.



Skype was used for chat and internal team meetings, office to office (rarely person to person)



A file server was our assumed home for any storage requirements.



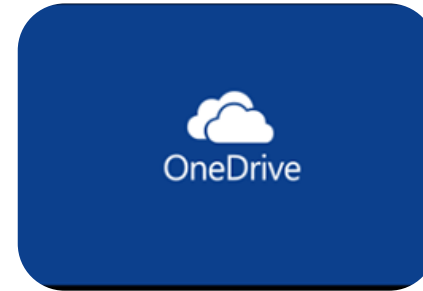
Exchange server for email

# THE JOURNEY TO CLOUD

Microsoft Office 365 was not the offering it is today, the tools set was still developing and very much in its infancy.

We started with cloud email.

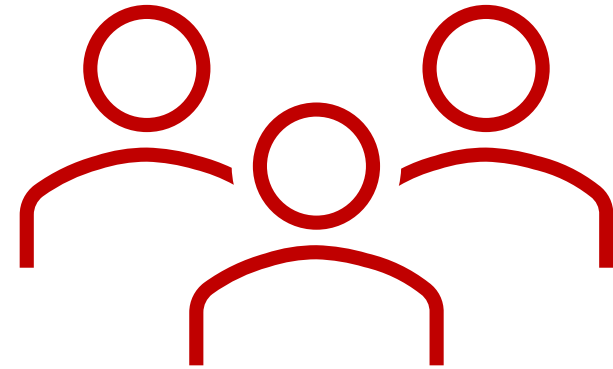
Our first attempt to transition to OneDrive was unsuccessful.



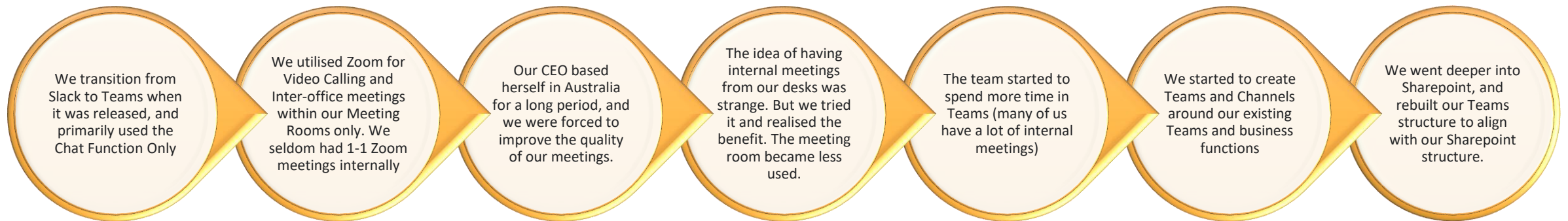
## MICROSOFT TEAMS

The powerhouse which is Microsoft Teams helped to kick start our modern workplace journey.

Teams presented as a central home for chat communication, calling, collaboration and document storage.

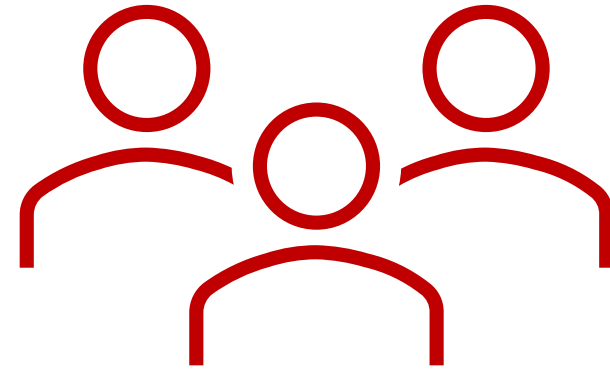


# Our Evolution in Teams



## MICROSOFT TEAMS - NOW

- All our Internal Meetings are in Teams.
- A large number of our customer meetings are done in Teams.
- Instant Messaging is regular and constant, supplanting Email as primary communication method.
- We have extensive use of Channels for Announcements, Conversations and Notifications.
- We drive other systems via Teams, i.e. Forms, Polls etc.

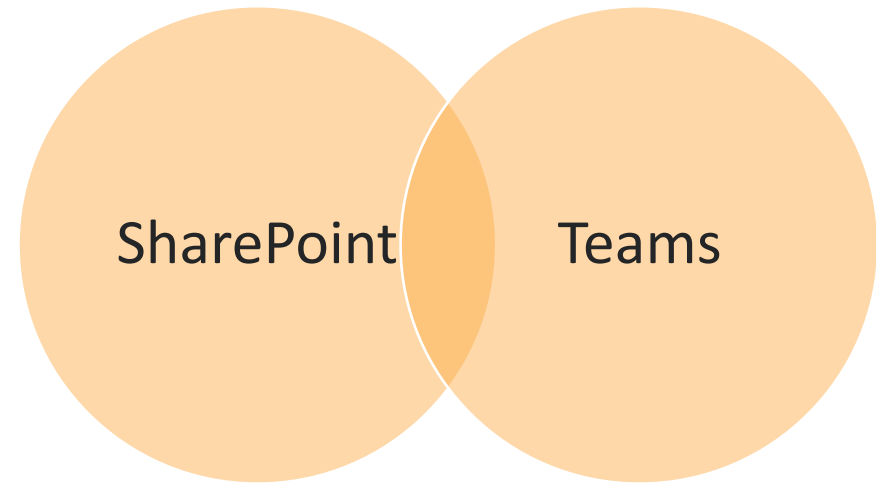




# SHAREPOINT

We were starting to see real value in Teams and realised the vital link to SharePoint.

As this evolved Organisational Team sites, Functional Team sites and Project based Teams all had a set home in both SharePoint and Teams that interacted with each other.



# PRODUCTIVITY

Paper based processes were replaced by Microsoft Forms, these were automated into smart approval processes with Power Automate.

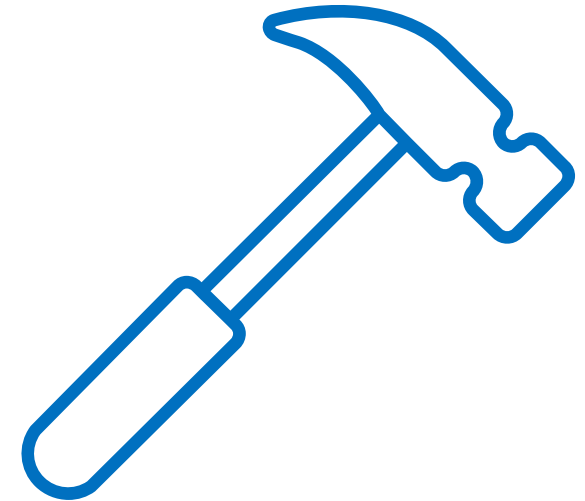
Planner became a home for Internal project task tracking and ToDo for individual task management.



## ENHANCED TOOLSET

Microsoft modern workplace has simplified our internal toolset, many tools and products have been collapsed and replaced by the modern workplace suite vastly improving productivity and reducing our management requirements.

Modern workplace enhanced security means all users/devices are protected by Multi Factor authentication.



## DRAWBACKS/RESERVATIONS

- Working Remotely limits ability to interact meaningfully
- We are already using Teams...
- We tried Teams but it didn't take off
- Do we need a Server?
- Remote Meetings aren't as good
- How are we best to use our Meeting Rooms?



## SUMMARY: REAL-WORLD BENEFITS

- More connected team (via IM, Voice, Video)
- Collaboration (work on the same projects together)
- Reduce reliance on Internal email (85% reduction)
- “Work Anywhere” flexibility
- Top Drawer Security
- Governance (Data Loss Prevention)
- Remote (Smaller) Offices became more connected
- Do away with admin-heavy, paper-based processes

**Invaluable during lockdowns!**



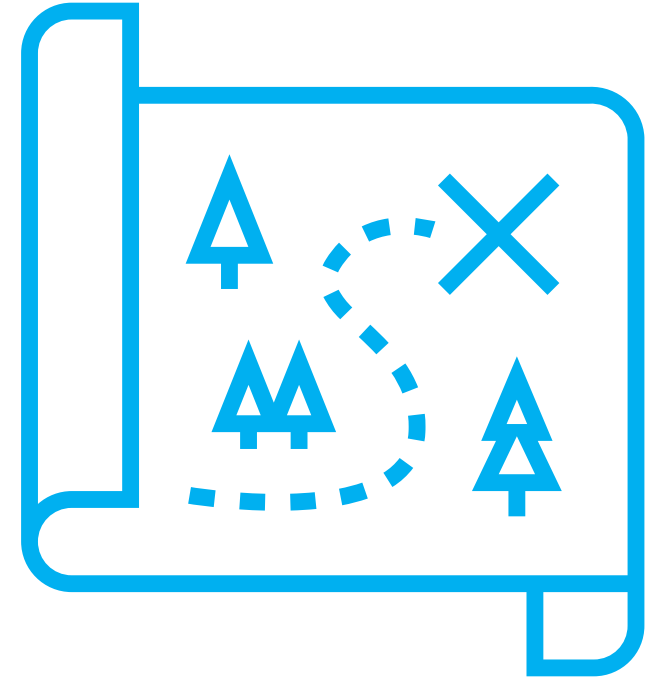


## NEXT STEPS

### The Microsoft 365 Modern Workplace Journey

These are not technical questions 😊

- Where are you now in your journey?
- How far do you want to go?





# THANK YOU

the I.T. team has been in business since 2004.

Our focus has always been on offering a fresh range of I.T. related services and support designed to help client organisations maximise productivity and protect themselves from all kinds of data related risks.

**the I.T. team**<sup>™</sup>  
Maintaining the health of your I.T. system

---

[theitteam.co.nz](http://theitteam.co.nz)